

NEW YORK SPACES

THE HOME DESIGN MAGAZINE OF METROPOLITAN NEW YORK



modern
LUXE

PARK AVE TO CHELSEA
englewood **GLAM**
NEW CANAAN NOW

JEWEL BOXES

A former
Tiffany flagship
store gets a modern
makeover in a cubistic
glass tower

WINDOW ON THE PAST

The sculptural silhouettes of the apartment's original cast-iron, floor-to-ceiling windows contrast dramatically with the building's contemporary glass façade. Designer Vicente Wolf's interior design aims to capture the same classic-meets-modern mix as Eran Chen's daring architecture, pairing Chinese antiques, mid-century chairs, and contemporary upholstered seating.



INTERIOR DESIGN VICENTE WOLF

TEXT SARA BLISS

PHOTOGRAPHY ALBERTO GUGLIELMI





AT FIRST GLANCE, THE AMALGAMATED BANK BUILDING OVERLOOKING Union Square was just another boring white-brick box occupying a prime piece of Manhattan real estate. But hidden beneath the eight-story structure's bland surface was a gem waiting to be rediscovered: the sculptural, c. 1870 cast-iron framework of the original Tiffany & Co. flagship. Refaced in the 1950s to allay safety concerns (cast-iron pieces were falling off the building), the bones of the five-story structure

included arched floor-to-ceiling windows and 16-foot-high ceilings. Architect Eran Chen retained those details in his brilliant concept for condo development, 15 Union Square West. He enveloped the cast-iron structure in glass so the cast-iron arches remain visible, topped by six additional glass stories. "The envelope is designed in a cubistic manner, wrapping boxes of glass around a historical building in a very contemporary way," Chen explains.

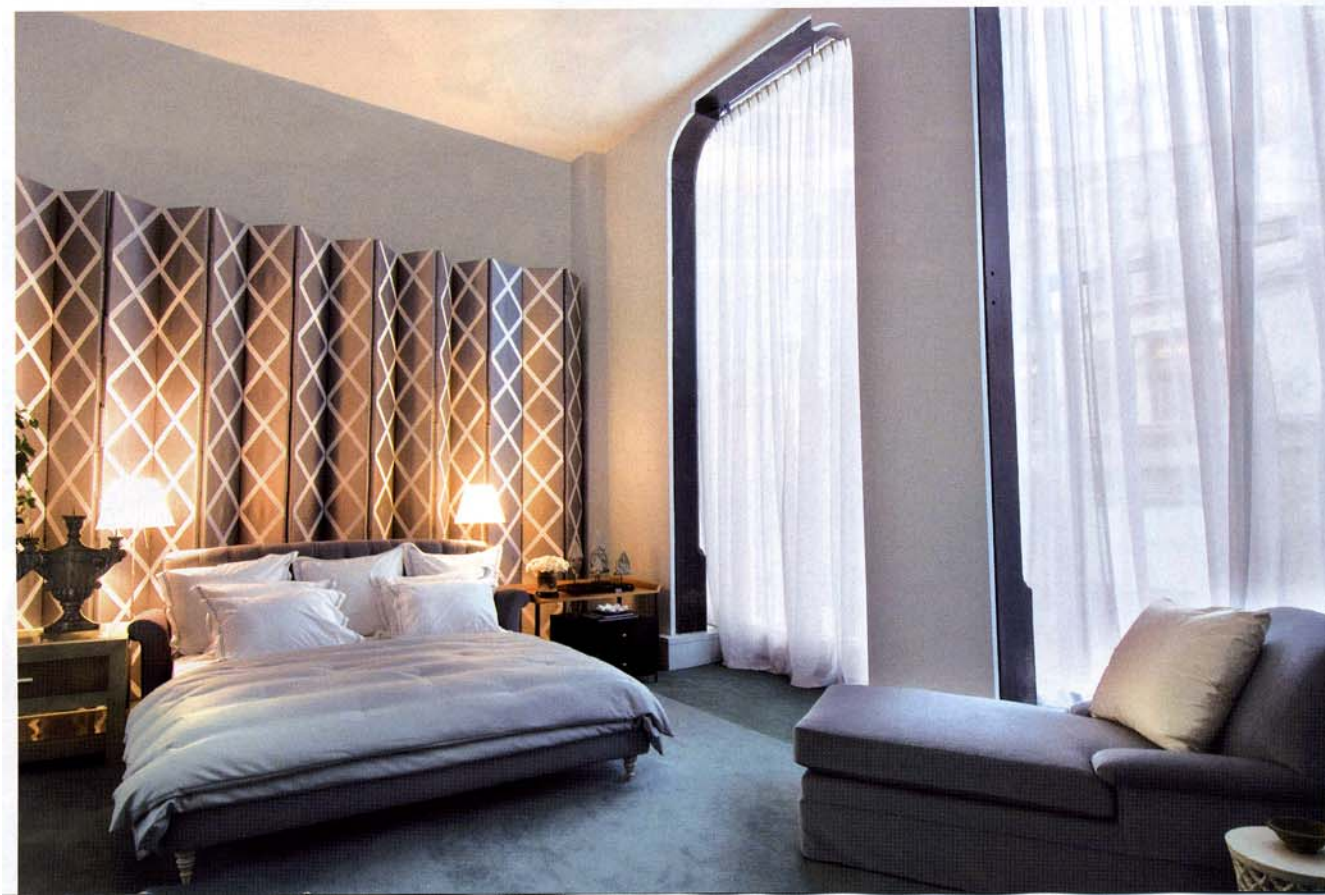
Vicente Wolf designed this three-bedroom apartment with the same eye toward balancing the classic and the current. In the living/dining area, the designer mixed 1960s Knoll Platner chairs with 18th-century Chinese armchairs around a table that mates a vintage wood top with a metal base. And the kitchen island deftly pairs turned-mahogany legs with a marble top and a steel base. Ebonized-oak floors serve to ground an airy space made calm with a neutral palette of taupes and creams in the living areas and ethereal shades of gray in the master bedroom. "I wanted it to feel like earth and sky—grounded, yet soft and dreamlike," says Wolf. The textures of a jewel box have returned to Union Square. ~ See Resources.



CONTINUUM

DESIGN

Throughout the apartment's interior, Vicente Wolf called on a variety of shapes, textures, and details to "blend" past and present. Above: The kitchen's bronze-framed cabinets have ceruse oak doors and drawers. Below: Graphic screens against one wall of the master bedroom draw the eye upward toward the 16-foot ceiling.



MAKING A SPLASH

In the master bathroom, a square panel of white onyx is lit from behind, casting light on the claw-foot soaking tub. Vicente Wolf describes the subdued hue of the marble walls as "the color of money."